

# JR to 25 Project Update

## Juvenile Rehabilitation

Original Date: Dec. 23, 2019

Date Updated: Jan. 6, 2020

JR | Approved for distribution by Kathleen Harvey

[www.dcyf.wa.gov](http://www.dcyf.wa.gov)

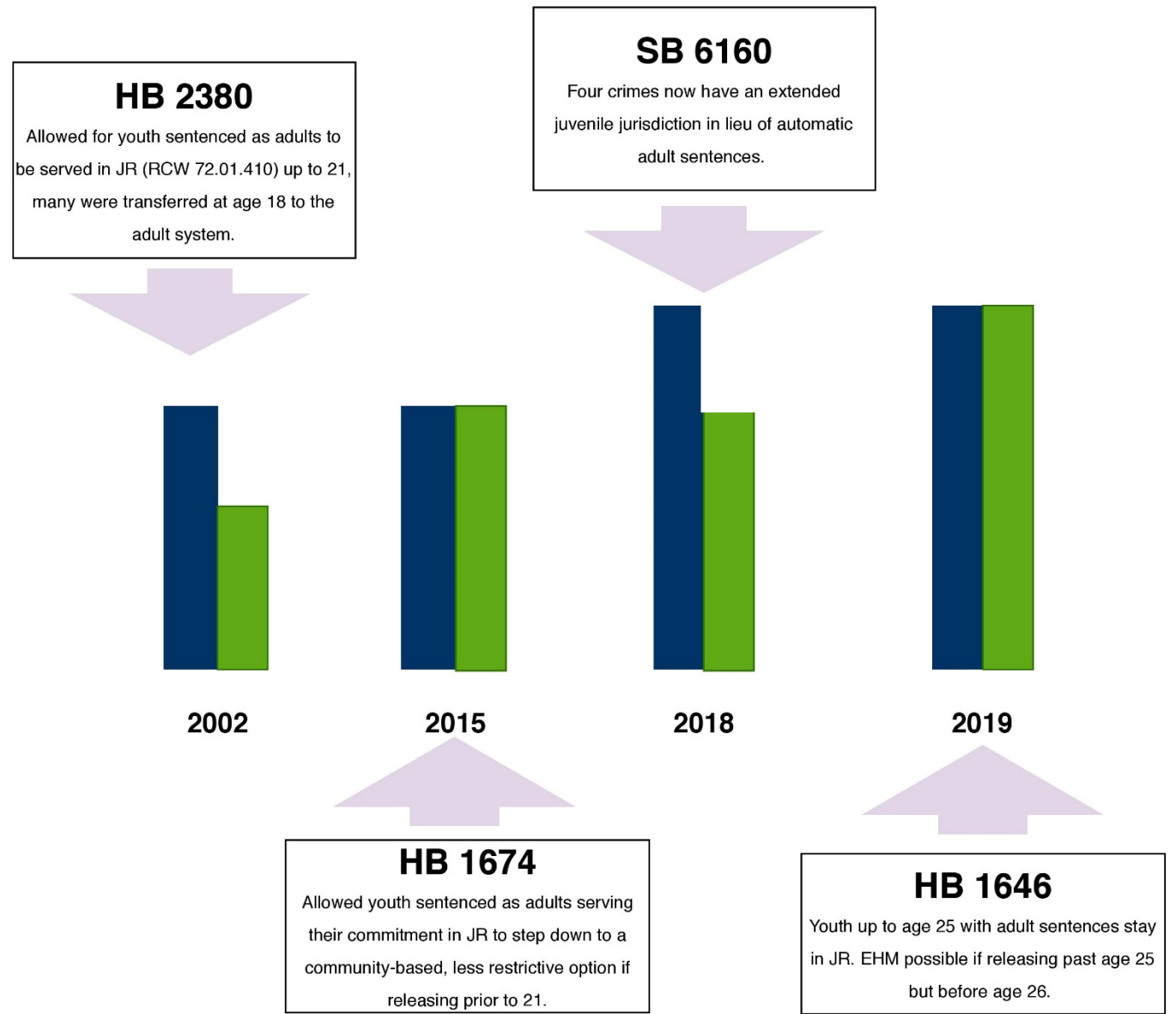


Washington State Department of  
**CHILDREN, YOUTH & FAMILIES**

# Juvenile Rehabilitation's Guiding Principles



# Evolution of Juvenile Rehabilitation Jurisdiction



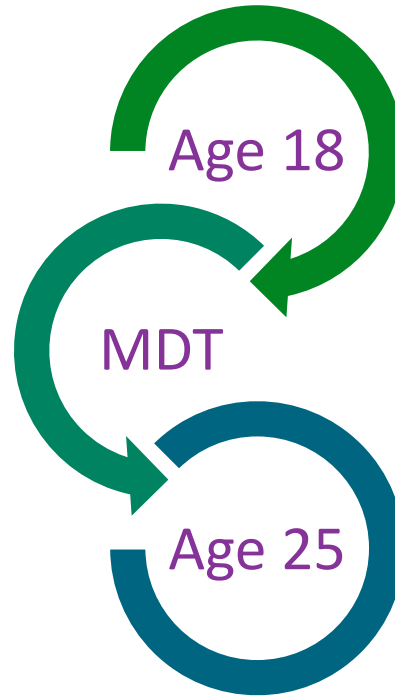
# Serving Young Adults to Age 25

## 2018 | E2SSB 6160

Extends **juvenile jurisdiction** for ages 16 or 17 up to age 25 for specific offenses.

A++ crimes include:

- Robbery 1
- Drive-by shooting
- Burglary 1 (if juvenile has a prior felony or misdemeanor offense)
- Other offenses with firearm and sentenced to 12 months.



## 2019 | E2SHB 1646

- Individuals convicted in adult court for a crime committed under age 18 are placed in the initial custody of the DCYF instead of DOC.
- They can now remain in the custody of DCYF until the age of 25 (previously 21).
- This creates a Multi-disciplinary Team (MDT) process.
- Allows persons in the custody of DCYF with an earned release date between age 25 and 26 to serve sentence in partial confinement on electronic home monitoring.



# JR to 25 Goals and Priorities



## Health

- All JR young adults and staff are safe and healthy.
- Reduce recidivism and improve quality of life after JR.



## Education

- JR young adults have opportunities to thrive physically, emotionally, educationally and vocationally.



## Resilience

- Community in-reach includes family, community partners and those with lived experience.



## Improve

- With stakeholders, address concerns and meet legislative requirements.
- Evaluate project and reassess processes.



# Our Roadmap

1646  
passes

July 1,  
2020

## July – Sept. 2019

- ✓ Young adults stay past 21
- ✓ New admits over 21
- ✓ Supplemental submitted
- ✓ **Initiate MDT**
- ✓ Project manager hired

## Oct. 2019 – Feb. 2020

- ✓ **MDT completed**
  - JR staff hired and trained
  - Programs expanded with new funding
  - IT infrastructure
  - Identified services and contracts begin

## Feb. – March 2020

- Services/contracts rollout
  - DOC transfers initiated
  - Young adults advisory

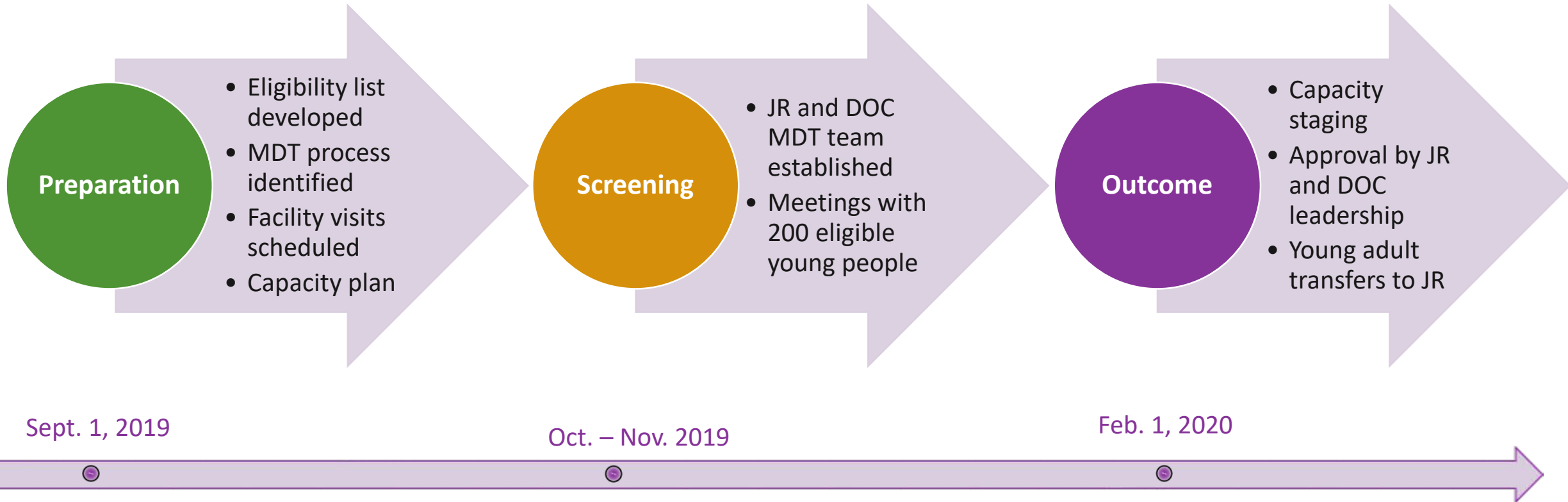
## April – June 2020

- DOC transfers continue
- Monitor and assess progress
- Create five-year plan
- Work on biennial budget

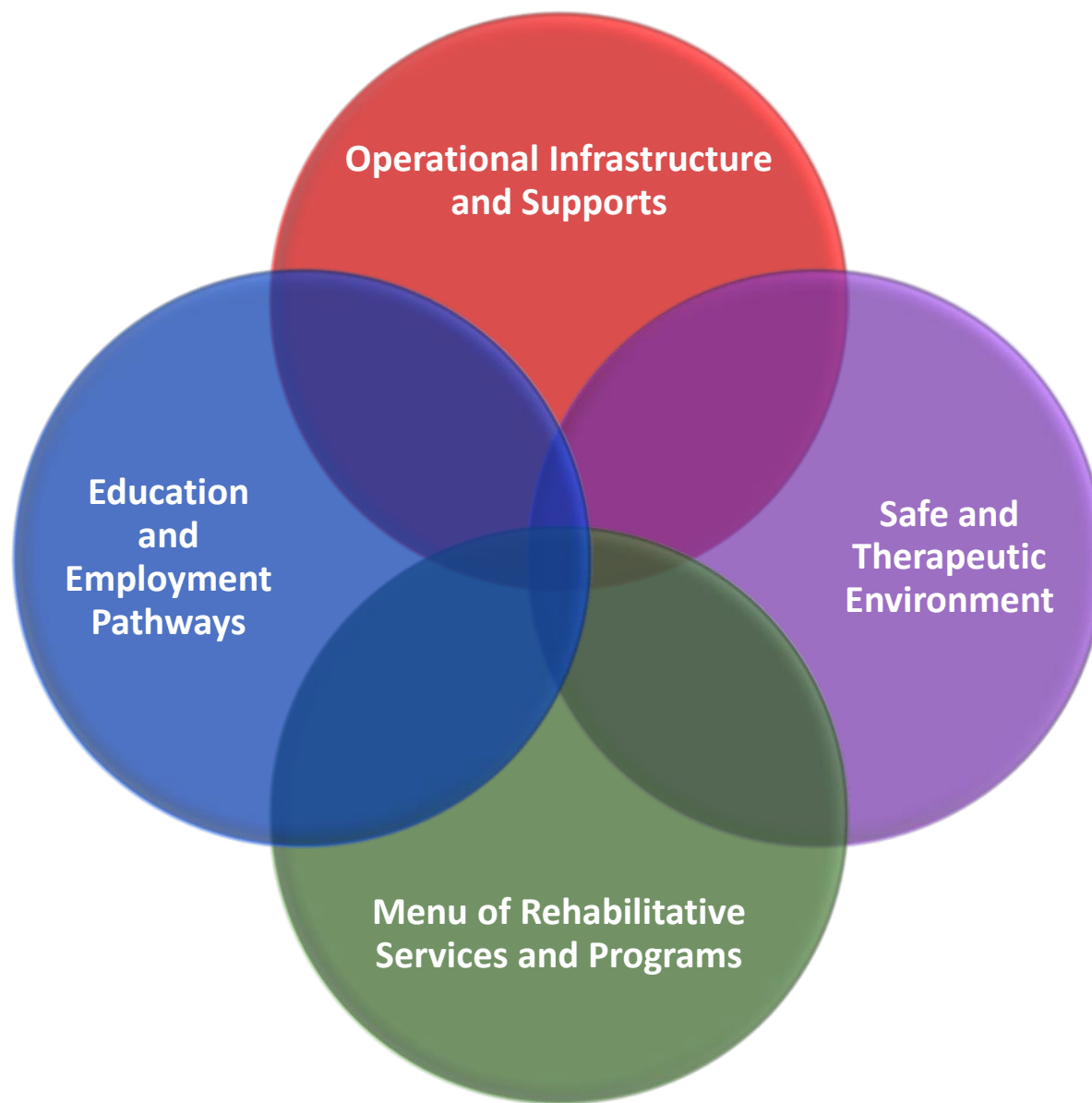
- ✓ Completed
- In Progress
- Not Started
- BOLD** Leg. deliverables



# Planning and Preparation for DOC Young Adults



# Deliverables





# Operational Infrastructure and Supports

## IT Supports



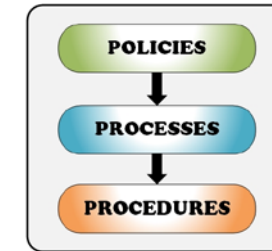
- Client data system
- Tracking and reporting
- Client internet access

## Legal



- Sentencing
- Protection orders
- Statutory review

## Policy



- Policy updates
- Protocols and practice
- Engage and inform



# Safe and Therapeutic Environment

## Workforce



- Fully staffed
- Training
  - Oregon consultation
  - Trauma informed
  - Professional boundaries

## Young Adults



- Build on young adult leadership
- Developmentally appropriate programs and services
- Young adult feedback



# Menu of Rehabilitative Services

## Treatment



- Assessment
- Identification
- Prioritization

## Reentry Planning



- Reentry planning
- Least Restrictive Programs
- Transformational Mentoring



# Education and Employment Pathways

## Post-Secondary Education



### Guided pathways

- Two and four-year degrees
- Vocational trades
- Pre-apprenticeship

## Jobs and Career



- Work-based learning
- Collaborate with WA workforce professionals
- Expand young adult job opportunities
- Living wages



# Contact Information

- Kathleen Harvey, Director of Community, Reentry and Parole  
Kathleen.Harvey@dcyf.wa.gov  
(360) 902-8086
- Ryan Pinto, Regional Administrator  
Ryan.Pinto@dcyf.wa.gov  
(206) 639-6010
- Lisa McAllister, Office Chief Reentry and Transition  
Lisa.McAllister@dcyf.wa.gov  
(360) 902-8463

