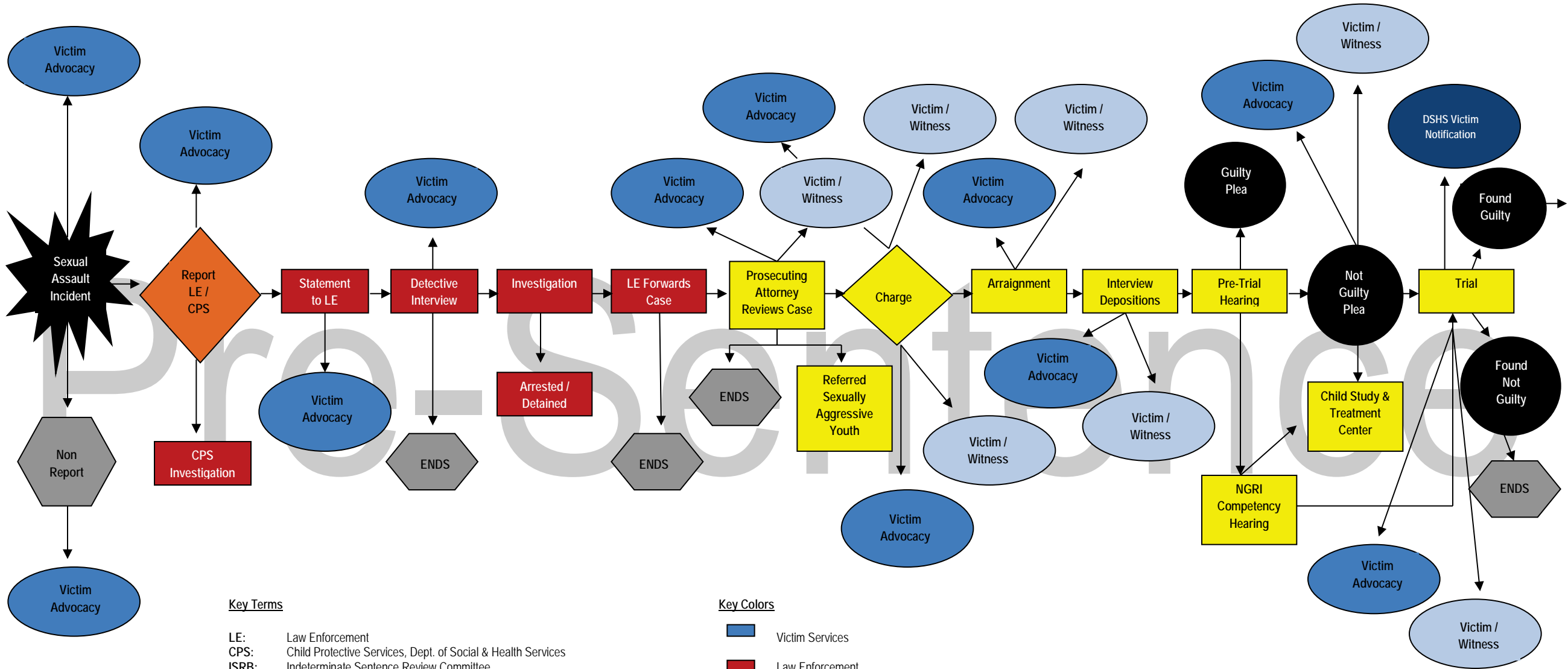


Washington State Juvenile Sex Offender Management System



- Key Terms**
- LE: Law Enforcement
 - CPS: Child Protective Services, Dept. of Social & Health Services
 - ISRB: Indeterminate Sentence Review Committee
 - SVP: Sexually Violent Predator
 - DOC: Department of Corrections
 - SSODA: Special Sex Offender Disposition Alternative
 - SSC: Special Commitment Center
 - ESRC: End of Sentence Review Committee
 - NGRI: Not-Guilty by Reason of Insanity

- Key Colors**
- Victim Services
 - Law Enforcement
 - Criminal Justice
 - Detention
 - Community Re-Entry
 - Release/Adjudication/Ends